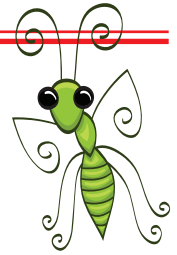


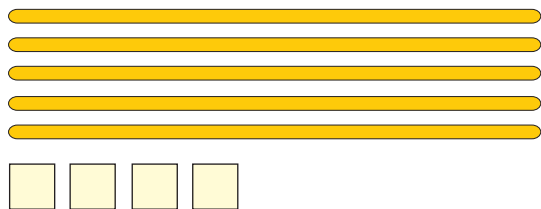
Mathe Online-Schule



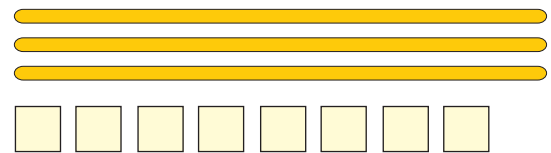
Zahlen und Zahldarstellung bis 100

 = 1 Zehner (Z)

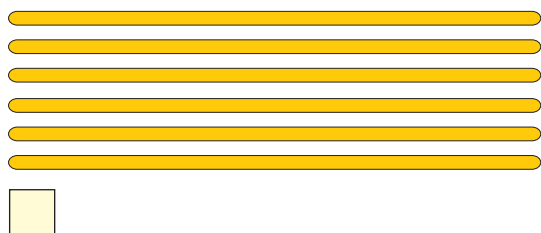
 = 1 Einer (E)



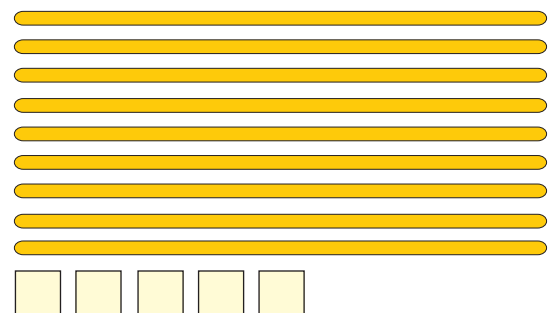
$$\square \text{ Z} + \square \text{ E} = \square \square$$



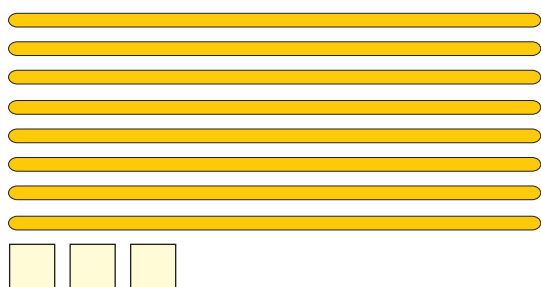
$$\square \text{ Z} + \square \text{ E} = \square \square$$



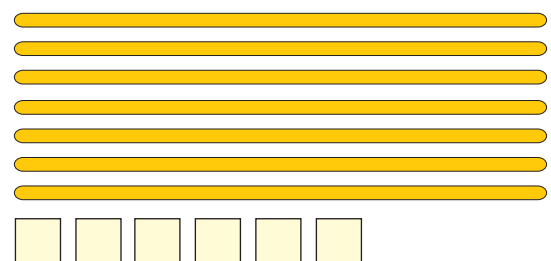
$$\square \text{ Z} + \square \text{ E} = \square \square$$



$$\square \text{ Z} + \square \text{ E} = \square \square$$



$$\square \text{ Z} + \square \text{ E} = \square \square$$



$$\square \text{ Z} + \square \text{ E} = \square \square$$